



PROCEDURES FOR RENEWING YOUR MEMBERSHIP with Glue Up

THANK YOU ALL SO MUCH FOR YOUR PATIENCE WITH OUR TRANSITION FROM JAYCEE MEMBER TO GLUE UP. WE APPRECIATE IT MORE THAN WE CAN SAY. WE KNOW THAT THIS NEW SYSTEM WILL BE WORTH THE UNFORESEEN CHALLENGES IN THE END.

GLUE UP HAS THE CAPABILITY TO KEEP YOUR CHAPTER'S CONTACTS ALL IN ONE PLACE, FILTER THEM BY NUMEROUS DATA POINTS AND SEND GROUPS OF PEOPLE SCHEDULED EMAILS. OUR STATE MEMBERSHIP TEAM IS LEARNING RIGHT ALONG WITH YOU AND WE ARE CONFIDENT THAT TOGETHER, WE CAN MAKE THIS SYSTEM WORK FOR EACH CHAPTER.



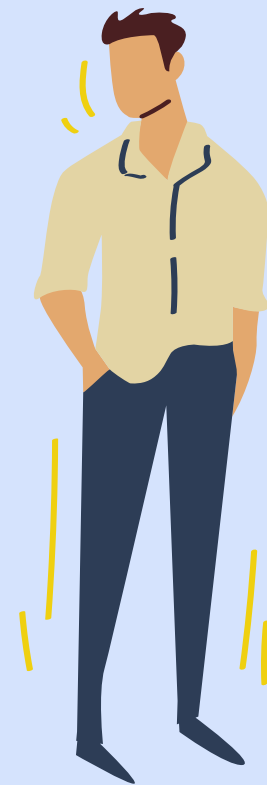
Annual Member

You pay your JCI dues every year on your anniversary date. You currently have a 90 day grace period to make payment. So, if you joined 8/13/18, you will receive notice on 7/13/22 that payment is due soon. you will have until 11/13/18 to pay.



The 90 day grace period will only be granted through the end of the third quarter of the year. Starting 9/1/22, the grace period will be lowered to 30 days.

JCI Graduation in 2022



This year, if you were born in 1980, you will be an active member until you reach your anniversary date. So, if you joined on 11.17.13, on 11/16/22, your membership will expire and you will be a full-blown adult. Congratulations!

If you were born in 1981, you may or may not be allowed to renew your membership this year. If you are still 40 years old on your JCI anniversary date, you are allowed to renew for one full extra bonus year. Aren't you lucky?!

So, if you joined on 8/17/18 and your birthday is 9/2/81, you would still be 40 on 8/17 and therefor you would be allowed to renew. A person with an 8/17/18 anniversary and a 4/9/81 birthday would be 41 years old on their anniversary, and therefor not eligible for renewal in 2022.

Contacts in Glue Up

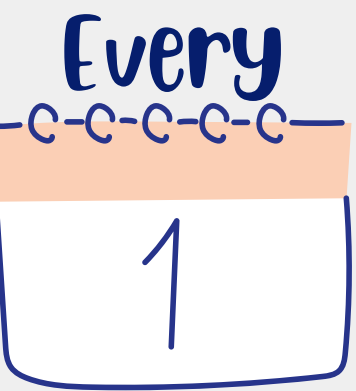
Contacts are like your chapter's little black book. You can add anyone that interacts with your chapter to contacts. This could allow you to send campaign to potentials, roosters, members and more!



This is the only section in glue up where a member's email address may be changed. You must be an admin to edit contacts for your chapter.

Monthly Member

You pay for your annual membership the same as above, however, you pay for yours in monthly installments on your join day. So, if you joined on 9/1/19, you will now be billed for the first of every month.



Base Monthly Member

You were a monthly member on 1/1/22. This means that last year, JCI Michigan paid for your current year of membership under our old arrangement with JCI USA. Once you hit your anniversary date this year, you will be switched to a Monthly Member type. The difference is in the accounting and amount of reimbursement we receive from JCI USA.



JCI Graduation with a monthly membership.

If you are graduate this year and you are on a monthly dues plan, you are still expected to pay dues through your 2022 anniversary date. So, if your join date is 4/1/12, you are still eligible to be an active member through the end of March 2022.



Campaigns in Glue Up

Glue Up has the capability to schedule email campaigns to your members. Whether you need to get a message to all of your members or just a small group, you can customize your message and choose when to send it. You can even set up automatic campaigns to your new members for onboarding. We suggest adding them to our JCI Go program for the fullest experience. Contact jcigo@jcimi.org for more information.

